

RH32

Hydraulic Dock Leveller.

Self-hanging Type, with 500, 800 or 1,000 mm Retractable Lip.



Technical Description.

The **RH32 dock leveller** with retractable lip is **specially designed for isothermal facilities**. Its design allows a **free space underneath the leveller to accommodate the tail lifts** of certain lorries. Its hydraulic retractable lip, available in lengths of 500, 800 or 1,000 mm, allows the platform to adjust firmly and precisely to the transport vehicles.

Dock levellers with a Self-supporting Type frame **do not require a pit frame** to be fixed to the pit, as the structure is integrated into the leveller itself. Its main advantage lies in the fact that both the pit frame and the dock leveller are installed simultaneously, since they form a single unit.

This configuration allows for a longer dock leveller while occupying a shorter space on the loading bay.

Technical Characteristics.

- | | |
|--------------------------------|--|
| • Platform | Tear plate 8/10mm thick
Anti-slip tear top surface |
| • Safety | Safety strut for maintenance |
| • Finishes | Painted or galvanized |
| • Dynamic Load Capacity | 6 tonnes (10 tonnes) |
| • Sizes | (Dock Leveller Measures)
L 2570 x (W 1990/2190/2390) x H 605 mm
L 3070 x (W 1990/2190/2390) x H 805 mm
L 3570 x (W 1990/2190/2390) x H 805 mm |

Options.

In addition to the standard technical specifications of the dock levellers other options are:

- Lip length 500,800 or 1000mm.
- With pouring tray as an option.
- Load capacity (heavy duty): 10 tonnes.
- Painting in RAL 7016 or any RAL colour.
- Sizes: up to 4500mm length x 2400 width x 900 height*

For other options and measurements, please contact our sales team.

The Inkema RH32 Dock Leveller with retractable lip complies with European regulations: **EN 1398**

Safety Elements.

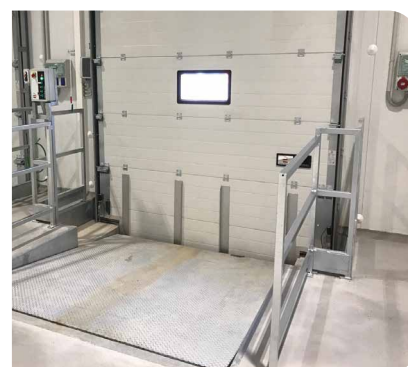
- **Green LED safety indicator** on the control panel
- **Hose rupture prevention system**
- **Emergency stop**
- **Toe guards:** Fixed and movable
- **Side Bands**
- **Safety Bar**
- **Anti-fall Safety Valves**



Pit for RH32 (standard)

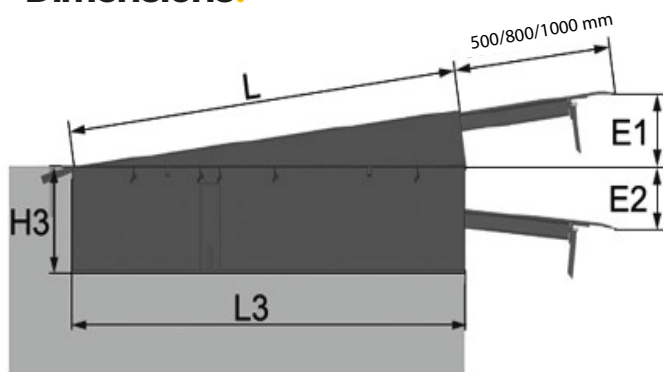


Pit for RH32 with formwork (optional)



The RH32 are suitable for any industrial sector

Dimensions.

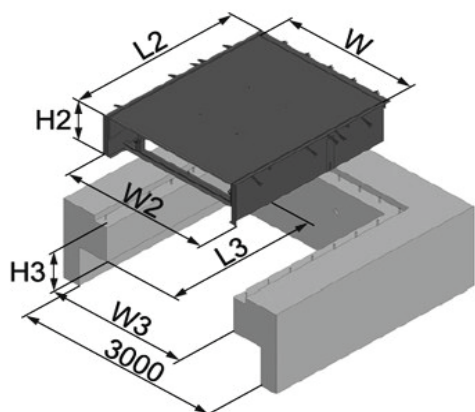


LIP	L2	L	W2	H2	L3	W3	H3	E1	E2
500	2060	1970	1800	600	2000	1880	610	320	260
	2560	2470	1800		2500	1880		320	350
	3060	2970	2000	800	3000	2080	810	350	500
	3560	3470	2200		3500	2280		470	400

LIP	L2	L	W2	H2	L3	W3	H3	E1	E2
800	2090	1980	1800	600	2020	1880	610	370	280
	2270	2160	2000		2215	2080		375	410
	2270	2160	2200	800	2215	2280	810	400	400

*2015 < L3 < 2216

LIP	L2	L	W2	H2	L3	W3	H3	E1	E2
1000	2570	2460	1800	605	2500	1880	610	380	400
	3070	2960	2000	805	3000	2080		410	570
	3570	3460	2200		3500	2280	810	540	450



Finishes.



Painted:

Excellent resistance to corrosion and environmental agents. Standard colour grey RAL 7016, any other colour can be chosen according to the RAL chart.



Galvanized:

Excellent resistance to corrosion and environmental agents.